

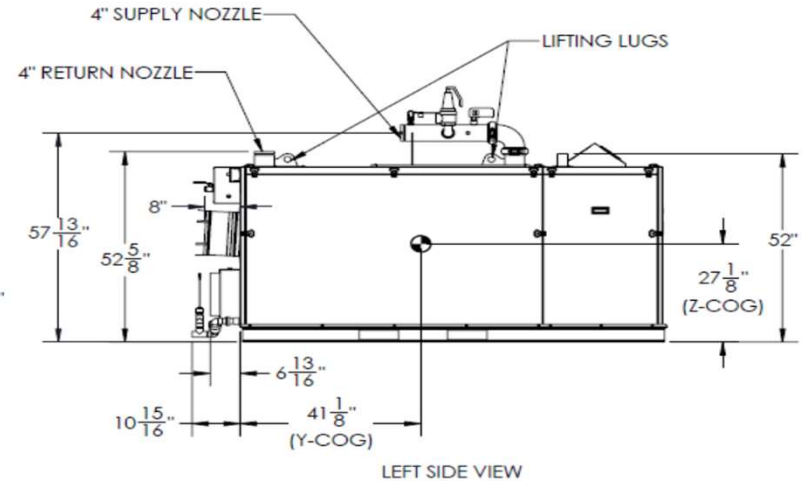
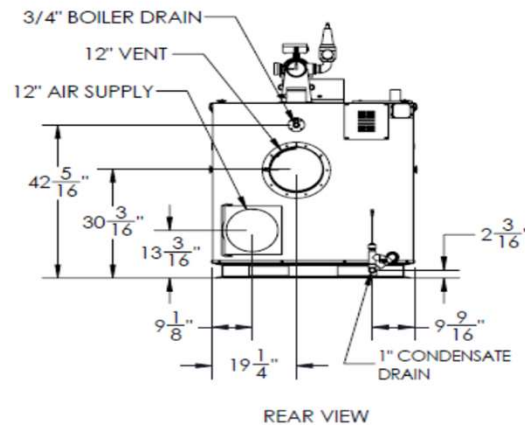
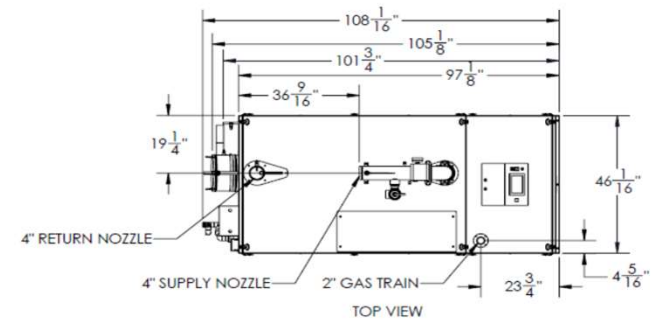
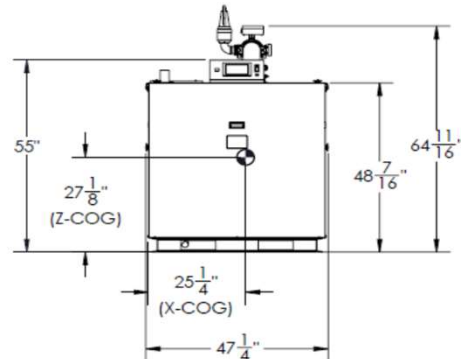
AMP CONDENSING BOILERS - SUBMITTAL DATA SHEET

RATINGS AND CAPACITIES		
Input - Low Fire	700,000	BTU/HR
Input - High Fire	3,500,000	BTU/HR
Output - High Fire	3,395,000	BTU/HR
Boiler Horsepower	101.4	BHP
Thermal Efficiency	97.0%	
Low Fire Thermal Efficiency	Up to 99%	
Heating Surface	403	Sq.Ft.
Water Content	45.3	Gallons
Fuel	Natural Gas or Propane	
Firing Rate	Full Modulation	
Burner Turndown	5:1	
Low NOx Emissions	< 10 ppm	
Inlet Gas Pressure (NG)	4" wc	Min.
Inlet Gas Pressure (Propane)	8" wc	Min.
	14" wc	Max.
Shipping Weight, Approximate	2,485	lbs

ASME Section IV (Max 160 PSIG / 210°F)
ETL Certified to ANSI Z21.13 / CSA 4.9
ETL Certified to UL 795 / CSA 3.1

DIMENSIONS / CONNECTIONS		
- Height	55"	(Note 1)
- Width	46"	(Note 2)
- Length	97-1/8"	(Note 3)
- Supply Connection	4" Grooved	
- Return Connection	4" Grooved	
- Vent / Air Intake Connections	12"	
- Gas Connection	2" NPT	

STANDARD EQUIPMENT		
- ASME Stainless Steel Heat Exchanger		
- Stainless Steel Pre-Mix Burner		
- Variable Speed Combustion Blower		
- Concert Control™ (24v)		
- High Limit Temperature Control, Manual Reset		
- Water Flow Switch		
- Low Water Cutoff, Manual Reset		
- Condensate Trap		
- Blocked Condensate Switch		
- ASME Pressure Relief Valve		
- Pressure / Temperature Gauge		
- Supply & Return Temperature Sensors		
- Flue Gas Temperature Sensor		
- Modulating Gas Valve		
- Direct Spark Ignition and UV Scanner		
- High/Low Gas Pressure Switches, Manual Reset		
- Combustion Air Switch		
- Blocked Vent Switch		
- 208-240-460v/3ph/60hz Line Voltage		
- Amp Draw: 208v (11.0); 240v (9.9) and 460v (6.4)		
- Category II and IV Venting		
- Individual or Common (Engineered) Vent System		
- CPVC, Polypropylene & Stainless Steel Acceptable *Material		
- Sealed or Room Combustion Air Intake		
- Up to 300 ft equivalent venting / air intake		



NOTE:



- CENTER OF GRAVITY LOCATION

NOTES:

1. Height dimension is from floor to top of control box.
2. Width does not include jacket butterfly clips that require 3/4" +/- clearance on each side.
3. Length is the measurement of the boiler skid base.
4. Dimensions shown are for reference only

FLOWS AND PRESSURE DROPS		
Delta T	Flow (GPM)	r P (Ft. Hd)
20°F r T (Max)	340	15.5
25°F r T	272	10.6
30°F r T	226	8.1
35°F r T	194	6.5
40°F r T	170	5.3
45°F r T	151	4.4
50°F r T	136	3.7
55°F r T (Min)	123	3.5

* Flue system material shall be capable of continuous operation at 210°F or higher and shall be certified to UL 1738 – venting system for gas-burning appliances cat II, III and IV.

AMP-3500

PROPERTY OF
THERMAL SOLUTIONS
Innovative Equipment for Hot Water Systems

PO BOX 3244 | LANCASTER, PA 17601

INNOVATIVE EQUIPMENT FOR
HOT WATER SYSTEMS

WWW.THERMALSOLUTIONS.COM

Updated 1/26/2024